

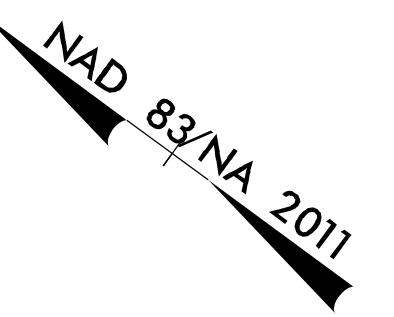
8.17.09

TRAFFIC VOLUME DATA

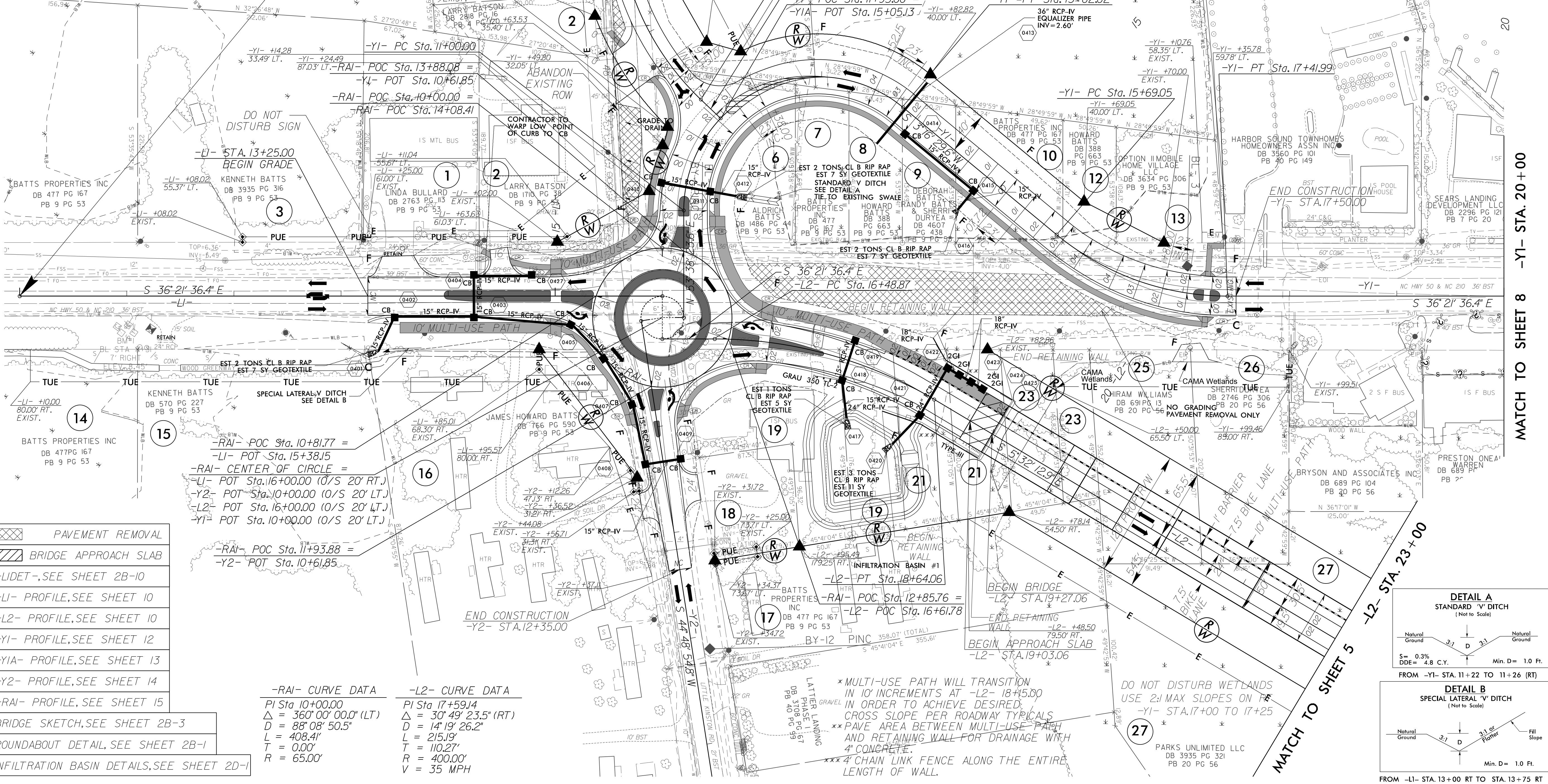
900		ROLAND AVE	
1,200			
17,200	400	200	16,800
30,000	600	300	29,100
NC 50 / 210		NC 50 / 210	
500		300	
1,000		400	
2017 AADT 1,100		LITTLE KINSTON RD	
2035 AADT 1,700			

-YI- CURVE DATA		-YIA- CURVE DATA	
PI Sta 13+65.85	PI Sta 16+59.14	PI Sta 11+48.40	PI Sta 13+92.38
$\Delta = 129^\circ 38' 06.0''$ (RT)	$\Delta = 39^\circ 38' 06.0''$ (LT)	$\Delta = 7^\circ 24' 35.1''$ (RT)	$\Delta = 42^\circ 00' 41.4''$ (LT)
D = 45' 50" 11.8"	D = 22' 55" 05.9"	D = 2' 30" 00.0"	D = 22' 55" 05.9"
L = 282.82'	L = 172.94'	L = 172.94'	L = 183.31'
T = 265.85'	T = 90.09'	T = 148.40'	T = 95.99'
R = 125.00'	R = 250.00'	R = 250.00'	R = 250.00'
V = 20 MPH	V = 30 MPH	V = 30 MPH	V = 30 MPH
SE = 04	SE = 04	SE = 04	SE = 04
RO = SEE PLANS	RO = SEE PLANS	RO = SEE PLANS	RO = SEE PLANS

PROJECT REFERENCE NO. B-4929	SHEET NO. 4
ROADWAY DESIGN ENGINEER	HYDRAULICS ENGINEER
DOCUMENT NOT CONSIDERED FINAL UNLESS ALL SIGNATURES COMPLETED	

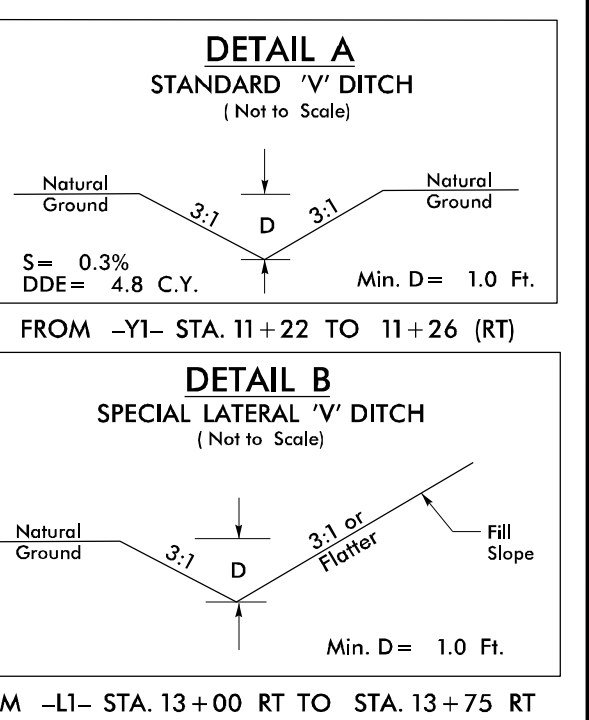


BEGIN TIP PROJECT B-4929
-L1- POT STA. 10+00.00



- PAVEMENT REMOVAL
- BRIDGE APPROACH SLAB
- FOR -L1- PROFILE, SEE SHEET 10
- FOR -L2- PROFILE, SEE SHEET 10
- FOR -Y1- PROFILE, SEE SHEET 12
- FOR -YIA- PROFILE, SEE SHEET 13
- FOR -Y2- PROFILE, SEE SHEET 14
- FOR -RAI- PROFILE, SEE SHEET 15
- FOR BRIDGE SKETCH, SEE SHEET 2B-3
- FOR ROUNDABOUT DETAIL, SEE SHEET 2B-1
- FOR INFILTRATION BASIN DETAILS, SEE SHEET 2D-1

-RAI- CURVE DATA	-L2- CURVE DATA
PI Sta 10+00.00	PI Sta 17+59.14
$\Delta = 360^\circ 00' 00.0''$ (LT)	$\Delta = 30^\circ 49' 23.5''$ (RT)
D = 88' 08" 50.5"	D = 14' 19" 26.2"
L = 408.41'	L = 215.19'
T = 0.00'	T = 110.27'
R = 65.00'	R = 400.00'
	V = 35 MPH



MATCH TO SHEET 8 -Y1- STA. 20+00

MATCH TO SHEET 5
 -L2- STA. 23+00

REVISIONS

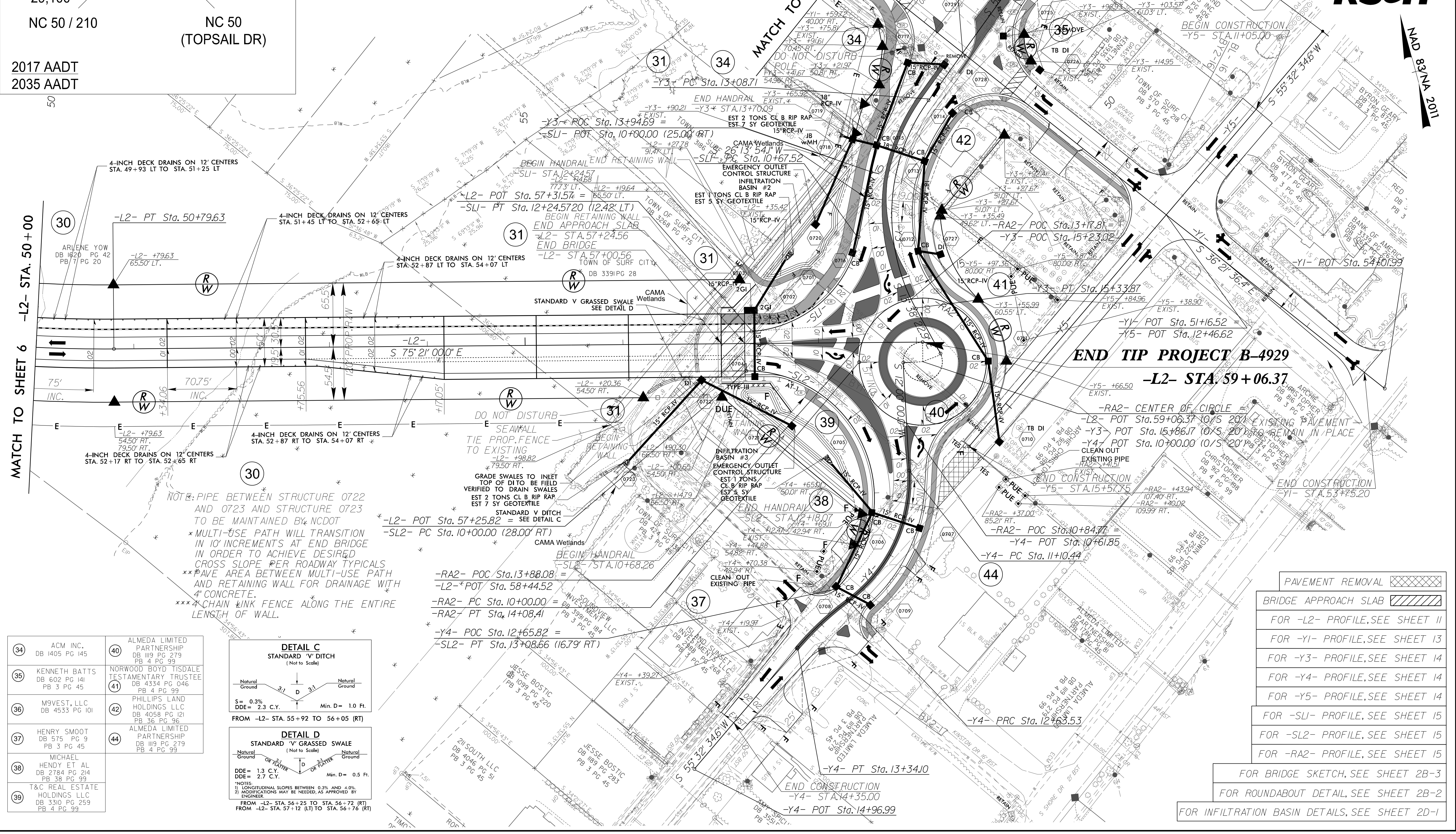
4/22/2016
R:\Projects\B4929\Proj\B4929_Rdy_psh_04.dgn

PROJECT REFERENCE NO. B-4929	SHEET NO. 7
RW SHEET NO.	HYDRAULICS ENGINEER
ROADWAY DESIGN ENGINEER	SEAL
DOCUMENT NOT CONSIDERED FINAL UNLESS ALL SIGNATURES COMPLETED	

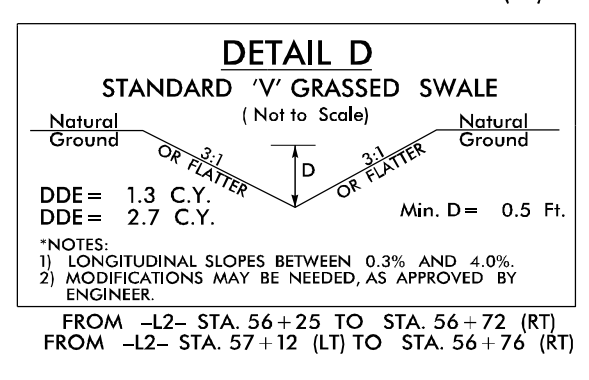
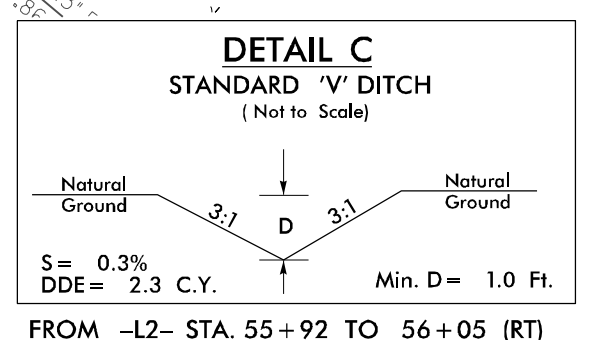


TRAFFIC VOLUME DATA	
NC 210 (NEW RIVER DR)	NC 50 (TOPSAIL DR)
11,900 19,400	9,300 16,300
9,700 16,100	7,100 13,000
16,800 29,100	
NC 50 / 210	
2017 AADT	
2035 AADT	

-L2- CURVE DATA	-Y3- CURVE DATA	-Y4- CURVE DATA
PI Sta 43+66.28 Δ = 69° 48' 47.1" (LT) D = 4' 10' 55.8" L = 1,669.30' T = 955.96' V = 1,370.00' R = 40 MPH SE = 03 RO = SEE PLANS	PI Sta 10+15.20 Δ = 5° 08' 12.84" (LT) D = 28° 38' 52.4" L = 17.93' T = 8.97' R = 200.00'	PI Sta 14+34.91 Δ = 64° 30' 12.46" (LT) D = 28° 38' 52.4" L = 225.16' T = 126.20' R = 200.00'
-RA2- CURVE DATA	-SL1- CURVE DATA	-SL2- CURVE DATA
PI Sta 10+00.00 Δ = 360° 00' 00.0" (LT) D = 88° 08' 50.5" L = 408.41' T = 0.00' R = 65.00'	PI Sta 11+56.39 Δ = 83° 37' 32.2" (RT) D = 47° 44' 47.3" L = 175.15' T = 107.34' R = 120.00'	PI Sta 13+22.06 Δ = 136° 02' 14.3" (RT) D = 44° 04' 25.2" L = 308.66' T = 322.06' R = 130.00'



34	ACM INC. DB 1405 PG 145	40	ALMEDA LIMITED PARTNERSHIP DB 1119 PG 279 PB 4 PG 99
35	KENNETH BATTS DB 602 PG 141 PB 3 PG 45	41	NORWOOD BOYD TISDALE TESTAMENTARY TRUSTEE DB 434 PG 046 PB 4 PG 99
36	M9VEST, LLC DB 4533 PG 101	42	PHILLIPS LAND HOLDINGS LLC DB 4058 PG 121 PB 3 PG 96
37	HENRY SMOOT DB 575 PG 9 PB 3 PG 45	44	ALMEDA LIMITED PARTNERSHIP DB 1119 PG 279 PB 4 PG 99
38	MICHAEL HENDY ET AL DB 2784 PG 214 PB 3 PG 99		
39	T&C REAL ESTATE HOLDINGS LLC DB 3310 PG 259 PB 4 PG 99		



- PAVEMENT REMOVAL
- BRIDGE APPROACH SLAB
- FOR -L2- PROFILE, SEE SHEET 11
- FOR -Y1- PROFILE, SEE SHEET 13
- FOR -Y3- PROFILE, SEE SHEET 14
- FOR -Y4- PROFILE, SEE SHEET 14
- FOR -Y5- PROFILE, SEE SHEET 14
- FOR -SL1- PROFILE, SEE SHEET 15
- FOR -SL2- PROFILE, SEE SHEET 15
- FOR -RA2- PROFILE, SEE SHEET 15
- FOR BRIDGE SKETCH, SEE SHEET 2B-3
- FOR ROUNDABOUT DETAIL, SEE SHEET 2B-2
- FOR INFILTRATION BASIN DETAILS, SEE SHEET 2D-1

REVISIONS
 8.17.17.99
 4/22/2016
 P:\proj\B4929_Rdy_psh_07.dgn
 2:36:05 PM