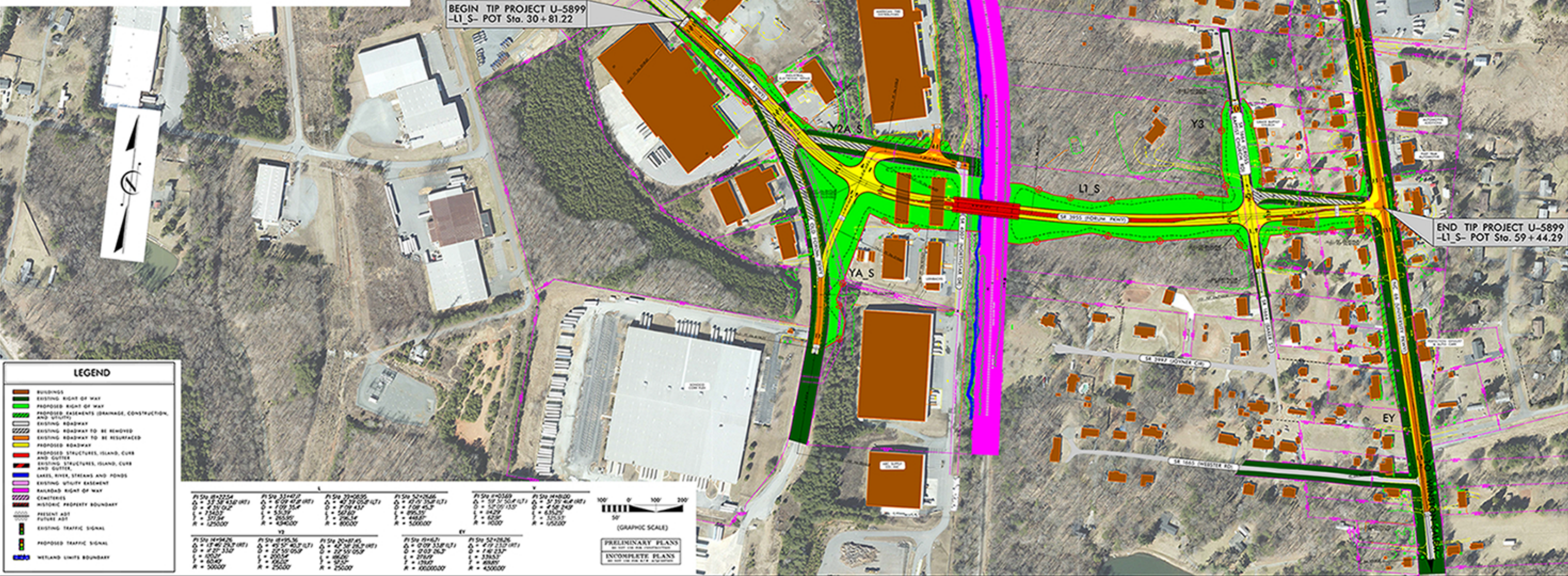
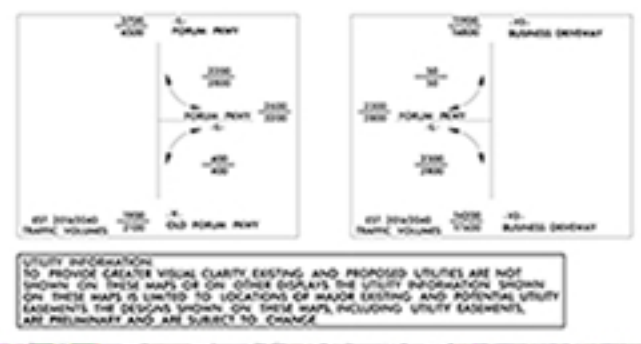


**PUBLIC MEETING MAP**  
PROJECT U-5899  
**FORSYTH COUNTY**  
EXTENSION OF FORUM PARKWAY (SR 3955)  
ALTERNATIVE 1  
JULY 2018

**DESIGN DATA**  
FUNCTIONAL CLASSIFICATION = LOCAL  
DESIGN SPEED = 40 MPH  
MAX SUPERELEV = 8%



**LEGEND**

- BUILDINGS
- EXISTING RIGHT OF WAY
- PROPOSED RIGHT OF WAY
- PROPOSED EASEMENTS (DRAINAGE, CONSTRUCTION, AND UTILITY)
- EXISTING ROADWAY
- EXISTING ROADWAY TO BE REMOVED
- EXISTING ROADWAY TO BE RESURFACED
- PROPOSED ROADWAY
- PROPOSED STRUCTURES, ISLAND, CURB AND GUTTER
- EXISTING STRUCTURES, ISLAND, CURB AND GUTTER
- LAKES, RIVER, STREAMS AND PONDS
- EXISTING UTILITY EASEMENT
- RAILROAD RIGHT OF WAY
- CWATERWAYS
- HISTORIC PROPERTY BOUNDARY
- PRESENT AST
- FUTURE AST
- EXISTING TRAFFIC SIGNAL
- PROPOSED TRAFFIC SIGNAL
- WETLAND LIMITS BOUNDARY

L		Y		EY	
Pi Sta 28+22.54	Pi Sta 31+47.7	Pi Sta 35+08.95	Pi Sta 52+26.66	Pi Sta 4+01.69	Pi Sta 44+00.00
Δ = 33.36 43.0' (RT)	Δ = 6.09 45.8' (RT)	Δ = 40.39 50.8' (LT)	Δ = 47.71 37.8' (LT)	Δ = 39.31 50.8' (LT)	Δ = 57.31 46.8' (RT)
Q = 4.35 0.2'	Q = 7.09 35.4'	Q = 7.09 43.7'	Q = 7.09 45.2'	Q = 52.05 13.0'	Q = 4.58 24.8'
L = 7.643.7	L = 53.339	L = 767.67	L = 895.30	L = 895.30	L = 635.20
T = 377.34	T = 265.95	T = 296.14	T = 448.87	T = 62.86	T = 525.37
R = 125000	R = 434000	R = 80000	R = 500000	R = 1000	R = 152000
Y3		EY			
Pi Sta 44+04.26	Pi Sta 49+55.56	Pi Sta 50+87.45	Pi Sta 52+26.66	Pi Sta 47+16.71	Pi Sta 47+16.71
Δ = 17.40 25.7' (RT)	Δ = 45.57 40.7' (LT)	Δ = 42.38 26.7' (RT)	Δ = 0.09 33.8' (LT)	Δ = 0.03 26.7'	Δ = 0.03 26.7'
Q = 2.07 3.12'	Q = 27.15 0.9'	Q = 27.15 0.9'	Q = 27.15 0.9'	Q = 27.15 0.9'	Q = 27.15 0.9'
L = 1000.0	L = 200.54	L = 66.00	L = 278.07	L = 378.57	L = 378.57
T = 60.42	T = 69.22	T = 57.57	T = 139.07	T = 88.87	T = 88.87
R = 30000	R = 25000	R = 25000	R = 1000000	R = 450000	R = 450000



PRELIMINARY PLANS  
DO NOT USE FOR CONSTRUCTION  
INCOMPLETE PLANS  
DO NOT USE FOR THE A.P.C. SIGNATURE